

**Beechdale Road, Brixton, SW2**

2 bedroom flat - conversion to let

**£450 Per Week**

Furnished

## Property Details

This wonderfully spacious split level two double bedroom flat forms part of a Victorian conversion tucked away on a quiet residential street just off Brixton Hill. The flat is on the top two floors of the building and includes a huge open plan living room/ kitchen with tons of natural light. It also has two large double bedrooms which are modern with hardwood floors. The modern bathroom is a good size with a bath. Brixton town centre is close by as are plenty of great local pubs and eateries which are on your doorstep.

## Features

- Victorian
- Hardwood floors and doors
- Split-level
- Good transport links
- Close to town centre
- Furnished

Council tax band C    EPC rating C (71)



Beechdale Road, Brixton, SW2

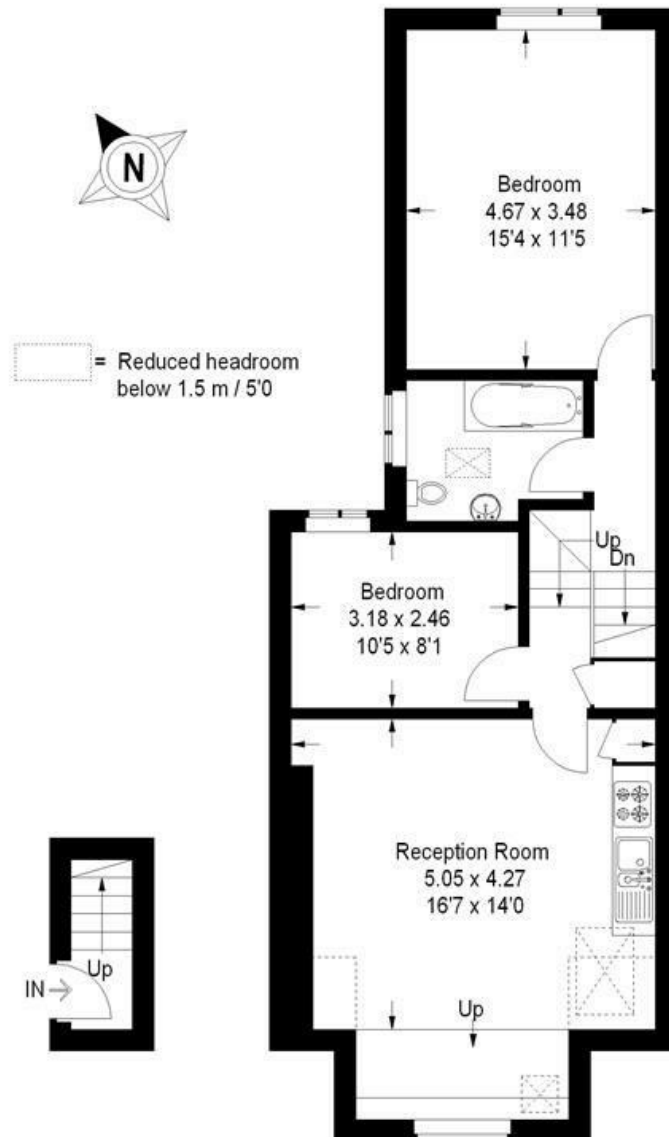
## Beechdale Road, SW2

Approximate Gross Internal Area

First Floor = 2.2 sq m / 23 sq ft

Second Floor = 62.5 sq m / 673 sq ft

Total = 64.7 sq m / 696 sq ft



First Floor

Second Floor

This plan is for layout guidance only. Not drawn to scale unless stated. Windows and door openings are approximate. Whilst every care is taken in the preparation of this plan, please check all dimensions, shapes and compass bearings before making any decisions reliant upon them. (ID173069)



Beechdale Road, Brixton, SW2

